



Energy/Environmental/Engineering

GIS SERVICES

GEOGRAPHIC INFORMATION SYSTEMS (GIS)

Geographic information is a strategic resource, essential to making informed decisions. Spatially referenced data can be mapped and analyzed in its proper geographic context. By linking conventional databases to digital maps, GIS helps organizations make better use of their information.

MM&A's GIS services include:

- ◆ GPS Field Data Collection
- ◆ Map Conversion and CAD Data Integration
- ◆ Database Design and Integration
- ◆ Hydraulic modeling and floodplain mapping
- ◆ Remote sensing and imaging
- ◆ Advanced cartography and map production
- ◆ Web-based GIS hosting and server configuration

The following are examples of how MM&A can help organizations take full advantage of their geographic data.



Mineral Reserve Evaluation

GIS can bridge the gap between geologic evaluation and tax assessment. Combining detailed geologic data with land ownership boundaries, MM&A has worked with mineral land owners to create accurate and authoritative asset evaluations for tax filing purposes.

Floodplain Management

MM&A is currently producing maps to meet FEMA's new Digital Flood Insurance Rate Map (DFIRM) specifications. Combining high-resolution aerial photography with flood plain boundary maps, DFIRMs are a valuable tool for county and regional floodplain administration.

GPS Data Collection

Handheld GPS (global positioning system) units provide an affordable way to catalog field assets for facilities management. A single operator can quickly collect point locations to within a foot of positional accuracy while recording any additional information about the object being surveyed. Roads, transmission lines, sewer systems, and storage tanks are among the features that can be mapped and described with GPS data loggers in a small portion of the time that a traditional survey would require. GPS is the fastest and most cost-effective way to add the geographic dimension to any data set.

Database Design

MM&A has experience designing relational database systems for the storage and maintenance of facility information. A database can present complex information in a clear, straightforward way, enabling better decision making. Storing data in a standard database environment ensures that records will be available to other applications and can be searched, updated, and analyzed by users with minimal training.



GIS-Based Environmental Analysis

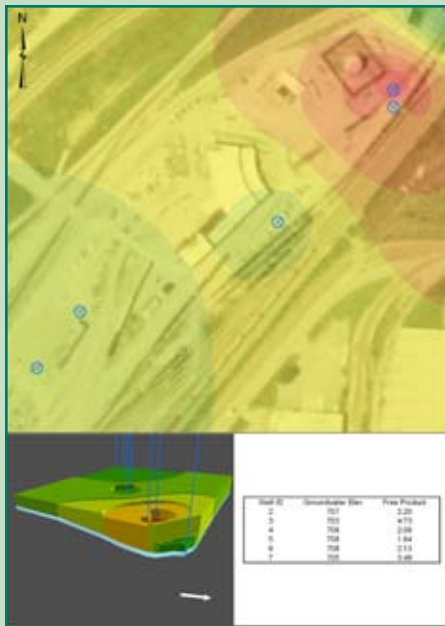
By integrating GPS data collection with the data management and processing capabilities of a GIS, MM&A's ESE division conducts comprehensive evaluations of soil and groundwater contamination for the energy and transportation industries. With the help of a GIS, contaminant levels can be quickly and effectively analyzed across various spatial and temporal scales. GIS-based reports, maps, and graphics also help guide remediation efforts by providing a powerful means of depicting the extent and severity of contamination.



This is an example of a geographically enabled gas well database



The above Windows® application displays storage tank locations and contents. Digital photos gathered in the field can also be stored with each feature.



Two and three dimensional maps and graphics provide further meaning to contaminant concentrations measured in the field.

OFFICE LOCATIONS

INDIANA
125 N. Weinbach Avenue #230 • Evansville, IN 47711
(p) 812.491.8777 (f) 812.491.8779
(e) indiana@mma1.com

KANSAS
8371 Melrose Drive • Lenexa, KS 66214
(p) 913.648.4424 (f) 913.648.4763
(e) lenexa@mma1.com

KENTUCKY
5480 Swanton Drive • Lexington, KY 40509
(p) 859.263.2855 (f) 859.263.2839
(e) lexington@mma1.com

LOUISIANA
4101 Viking Drive, Suite L • Bossier City, LA 71111
(p) 318.747.7734 (f) 318.747.7786
(e) bossiercity@mma1.com

NORTH CAROLINA
5825 Triangle Drive • Raleigh, NC 27617
(p) 919.786.1414 (f) 919.786.1418
(e) raleigh@mma1.com

OHIO
6860 Skies Edge Court #42 • Cincinnati, OH 45247
(p) 513.460.2921
(e) cincinnati@mma1.com

8100 Grand Ave., Suite 100-C
Cleveland, OH 44104-3110
(p) 330.350.6915
(e) cleveland@mma1.com

PENNSYLVANIA
3913 Hartzdale Drive, Suite 1306
Camp Hill, PA 17011
(p) 717.730.7810 (f) 717.730.7812
(e) camphill@mma1.com

TENNESSEE
10376 Wallace Alley Street • Kingsport, TN 37663
(p) 423.279.9775 (f) 423.279.9777
(e) kingsport@mma1.com

VIRGINIA
Suite 203, 11277 Airpark Road • Ashland, VA 23005
(p) 804.798.6525 (f) 804.798.5907
(e) ashland@mma1.com

WEST VIRGINIA
1018 Kanawha Boulevard East, Suite 400
Charleston, WV 25301
(p) 304.344.3970 (f) 304.344.3986
(e) charleston@mma1.com

200 George Street, Suite 6
Beckley, WV 25801
(p) 304.255.8937 (f) 304.255.8939
(e) beckley@mma1.com

HEADQUARTERS

Marshall Miller & Associates, Inc.
P.O. Box 848 • 534 Industrial Park Road
Bluefield, VA 24605
(p) 276.322.5467 • (f) 276.322.5460
(e) corp@mma1.com • www.mma1.com



Since 1975